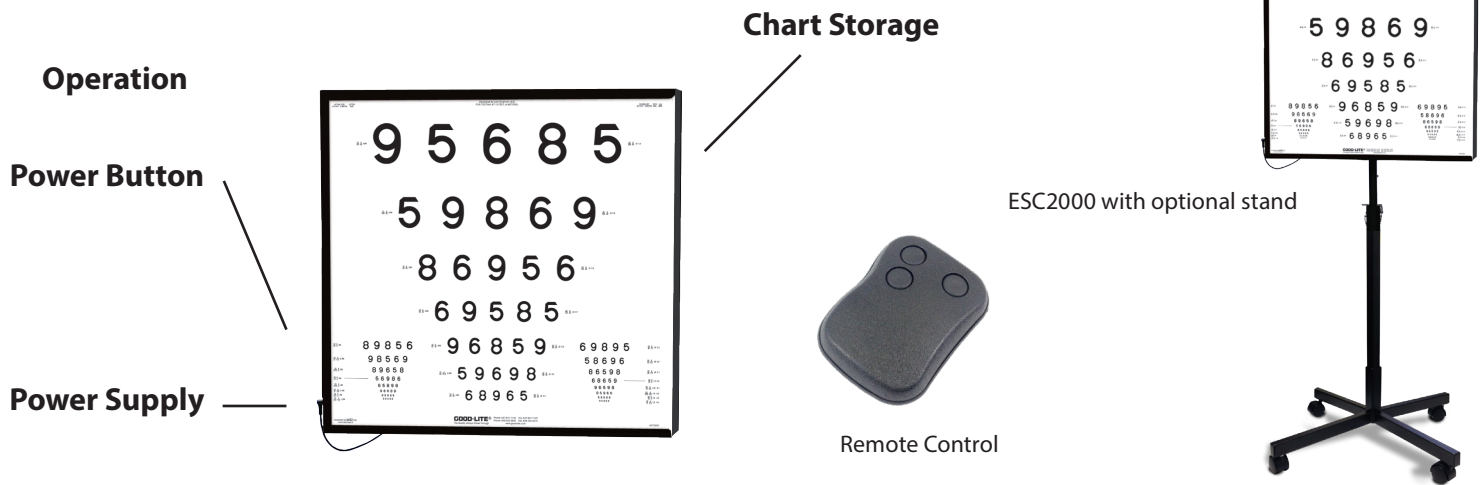
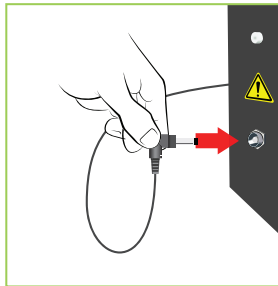


# ESC2000 Illuminated ETDRS Cabinet

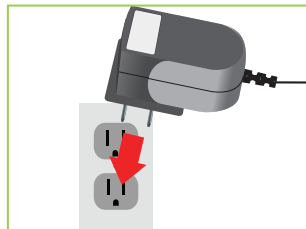
Part Number: ESC2000



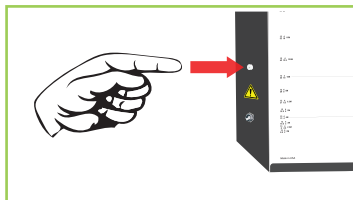
1. Plug power supply into ESC2000.



2. Plug power supply into electrical outlet.



3. Press On/Off button to turn ESC2000 on. Subsequent presses will cycle through the luminance levels.



i. Alternatively, press the top right button on the remote to turn ESC2000 On. Subsequent presses will cycle through the luminance levels.



## The ESC2000 Operation

The ESC2000 may be programmed from 1 to 9 different light level outputs/steps. Each level can be independently calibrated. The default factory setting is 9 levels calibrated as follows:

NOTE: Light levels step from lowest to highest during operation

STEP	cd/m <sup>2</sup>
1	85
2	3
3	160
4	20
5	40
6	300
7	400
8	640
9	800

Unit requires a 12Vdc @ 2.5Ah power supply (Good-Lite P/N 300321)

## Operate:

The ESC2000 may be operated using one of two methods:

1. LOCAL: Press Push Button Switch, on side of ESC2000 cabinet, to turn on first calibrated luminance level, as indicated by the 7-segment LED display above the button. Subsequent presses will step through remaining levels and then turn lights off.
2. REMOTE: Press LIGHT LEVEL SELECTION button on ESV1502 remote control to turn on first calibrated luminance level, as indicated by the 7-segment LED display located on the side of the ESC2000 cabinet. Subsequent presses will step through remaining levels and then turn lights off.