

# ESC2000™ ETD RS Illuminated Cabinet

## USER GUIDE

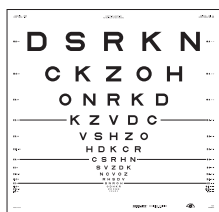


**GOOD-LITE®**  
OVER 90 YEARS OF VISION

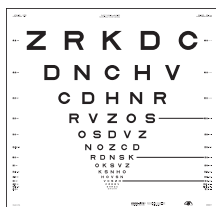


Power Supply

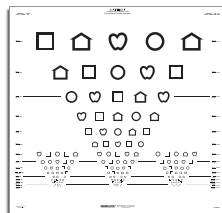
ESC2000™ ETDRS Illuminated Cabinet  
with optional floor stand



Original Series ETDRS  
Translucent Distance Charts



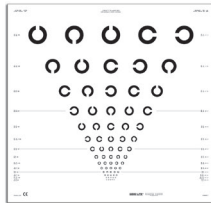
"2000" Series ETDRS  
Translucent Distance Charts



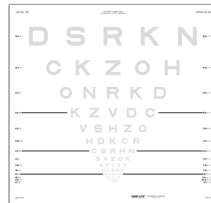
LEA SYMBOLS' ETDRS  
Translucent Distance Chart



LEA NUMBERS® ETDRS  
Translucent Distance Chart



Landolt C ETDRS  
Translucent Distance Chart



Low Contrast ETDRS  
Translucent Distance Chart

ESC2000™ ETDRS Illuminated Cabinet

Table Of Contents

Intended Use .....2

Warning and Precautions .....2

User Guide .....3

Mounting Guide .....3

Cleaning and Maintenance.....4

Service Information.....4

Disposal .....4

Electrical Conformity .....4

Warranty .....5

Legal Notices .....5

Product Specifications

Product: ESC2000™ ETDRS Illuminated Cabinet

Dimensions: 24.75"W x 24.875"H x 3.75"D (65.4 cm x 63.18 cm x 9.52 cm)

Weight: 20 lbs. (9 kgs)

Power Supply: 30w Switching Power Adapter with Universal Input 90 - 264VAC  
Interchangeable AC Plugs

Environmental Operating Temperature Range: 10°C to 44°C

Isolation is provided by the power supply



Read this guide carefully before using this product. Save this document for future reference. Failure to follow the procedures, warnings, and cautions may result in serious personal injury, property damage, and/or may void your warranty.

## Intended Use

Proper luminance affects visual acuity measurement results for vision screening and testing eye examinations. The ESC2000™ Illuminated Cabinet is intended to be used by an eyecare professional to provide consistent LED back-lighting for visual acuity and contrast charts used for visual acuity measurements.

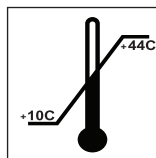
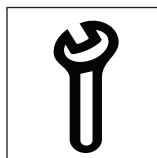
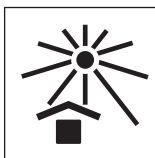
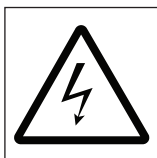


## Warnings

To reduce the risk of fire, electrical shock, injury, or damage to your machine:

- Do not use if unit is damaged.
- Use this product only for its intended use as described in this guide.
- Never leave your Illuminated Cabinet plugged in for long term storage.
- Never insert or drop any object into any opening on the device.
- Do not use the Illuminated Cabinet on or near hot surfaces.
- Only use the power supply adapter supplied to power this unit. Do not use the supplied power adapter with any other appliance.
- To avoid damage to the power supply adapter and cord, never carry the charger by the cord or yank to disconnect from an outlet. Firmly grasp the charger body and pull to disconnect. Do not pull cord around sharp edges or corners.
- Do not operate if power supply adapter or cord is damaged.
- Do not place the Illuminated Cabinet on a table since it runs the risk of tipping over damaging the unit and/or may void your warranty.

Failure to securely mount cabinet either to a wall or optional caster base may result in serious personal injury, property damage and/or may void your warranty.



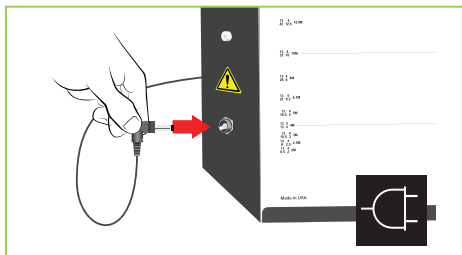
## Precautions

- Remove the power supply adapter from ESC2000™ ETDRS Illuminated Cabinet and electrical outlet before storing.
- Store your ESC2000™ ETDRS Illuminated Cabinet in a clean, dry place when not in use. Do not leave in direct sunlight, or exposed to extreme heat or cold.

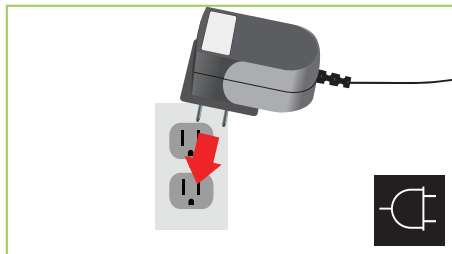


## User Guide

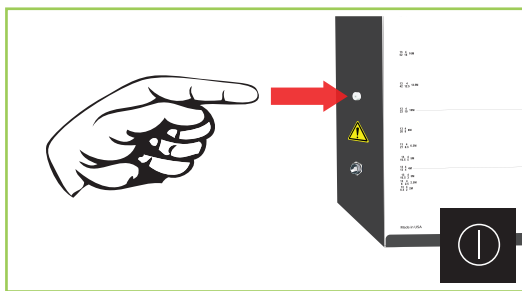
The ESC2000™ ETDRS Illuminated Cabinet is designed to be mounted on a wall or optional caster base. The ESC2000™ ETDRS Illuminated Cabinet should be securely mounted prior to use.



**Step 1:** Plug power cord into ESC2000™ ETDRS Illuminated Cabinet.



**Step 2:** Plug universal power supply into wall socket.



**Step 3:** Push switch to illuminate ESC2000™.

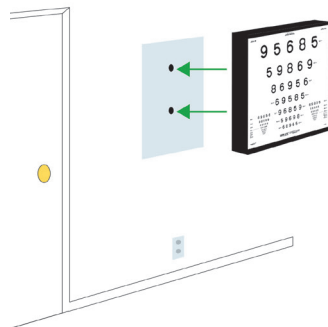
The ESC2000™ is pre-programmed for the following light levels: 85, 3, and 160 cd/m<sup>2</sup>. Up to 9 light levels can be programmed.

Remote must be used to change levels. Light level selection can now be made with light output turned off. Cabinet push button turns selected level on/off only.

### Wall Mounting

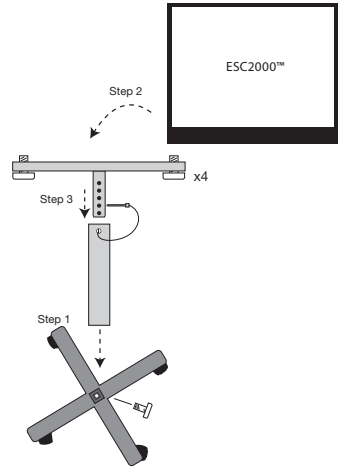
There are two (2) keyhole slots on 16" (40.64 cm) centers on the back of the unit for wall mounting. The ESC2000™ Illuminated Cabinet needs to be mounted at a height that is approximately at the patient's eye level.

Use appropriate fasteners designed for mounting surface with a minimum hanging weight of 60 lbs. (28 kg.).



**Mounting to optional Adjustable Caster Base (#500004)**

- 1.Insert tapered end of large pole into the caster base. It may be necessary to tap pole into the caster base to insure proper seating. Insert screw through the bottom of the base, into the pole.
- 2. Flip ESC2000™ ETDRS Illuminated Cabinet upside down. Place flat bracket on the bottom, aligning all four (4) holes. Thread and securely tighten all four (4) thumb screws through base plate and into the cabinet.
- 3. Insert base plate with ESC2000™ ETDRS Illuminated Cabinet into the larger base pole hole. Adjust stand to desired height and pin to secure.



**Cleaning**

You may clean the exterior of your ESC2000™ ETDRS Illuminated Cabinet by using a clean, dry cloth to remove dirt, dust, oil, grease etc.

Store all visual acuity charts out of direct sunlight. Over time, UV light may turn the charts yellow which could affect the results of testing. If charts yellow, discard and replace.



**Service Information**

There are no user repairable serviceable parts found in the ESC2000™ ETDRS Illuminated Cabinet. Contact Good-Lite if your ESC2000™ Illuminated Cabinet needs repair.



**Disposal**

Dispose of unit per federal, state, and local regulations.

**Electrical Conformity**

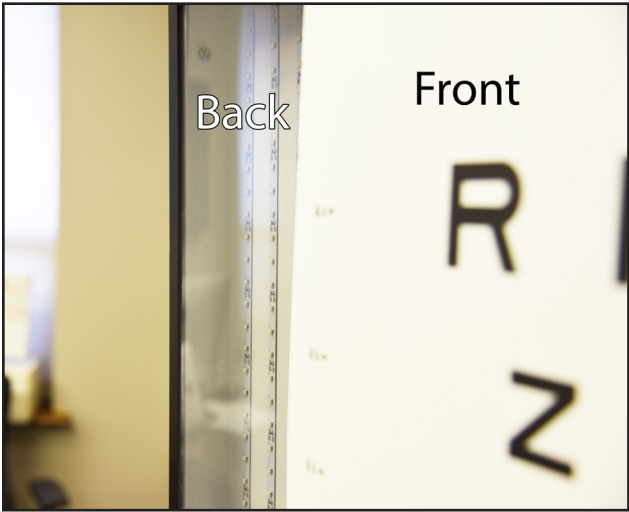
This product is designed to meet the requirements of the following regulations and standards for safety of electrical medical devices.

- CAN/CSA C22.2 No.61010-1-04
- ANSI/UL 61010-1, 2nd Edition
- 73/23/EEC; Low-Voltage Directive (safety)
- 89/336/EEC; Electromagnetic Compatibility Directive (EMC)
- Medical Device Directive MDD 93/42/EC

# Clear Acrylic Sheet Guide

***Each illuminated cabinet from Good-Lite comes with a clear acrylic sheet. Place chart in front of the sheet.***

- 1. Remove the protective film from the acrylic sheet.
- 2. Insert chart as shown



## Warranty

Good-Lite warrants the ESC2000™ ETDRS Illuminated Cabinet for one year from date of purchase against any defects in material or workmanship under normal use and service, subject to conditions and limitations as described below.

This warranty covers only normal use. Damage, defect, malfunctions, or any use, which does not comply with the operator's guide, are excluded. Damage or any failure caused by repair, which is done by anyone other than Good-Lite, shall not be covered.

The warranty obligations of Good-Lite shall be limited to repair or replacement of the ESC2000™ ETDRS Illuminated Cabinet. Good-Lite shall not be liable or responsible under any circumstances or in any amount for consequential or incidental damages, or for injury or damages to persons or property using or used in connection with the product or for loss of profits or other costs or expenses of any kind of character. There are no other warranties or representations by Good-Lite other than as set forth herein, either expressed or implied and no person, firm or corporation is authorized to make any representation or incur any obligation in the name or on behalf of Good-Lite except as stated herein.

# Legal Notices

## Software License

The Good-Lite products described in this guide may include copyrighted Good-Lite and third party software stored in semiconductor memories or other media. Laws in the United States and other countries preserve for Good-Lite and third party software providers certain exclusive rights to distribute or reproduce the copyrighted software. Accordingly, any copyrighted software contained in the Good-Lite products may not be modified, reverse-engineered, distributed, or reproduced in any manner to the extent allowed by law. Furthermore, the purchase of the Good-Lite products shall not be deemed to grant either directly or by implication, estoppel, or otherwise, any license under the copyrights, patents, or patent applications of Good-Lite or any third party software provider, except for the normal, non-exclusive, royalty-free license to use that arises by operation of law in the sale of a product

A Declaration of Conformity is available from Good-Lite upon request.





1155 Jansen Farm Drive  
Elgin, IL 60123 USA

Toll Free: 800-362-3860 Phone: 847-841-1145

Toll Free Fax: 888-362-2576 Fax: 847-841-1149

[www.good-lite.com](http://www.good-lite.com)



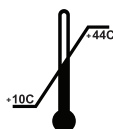
Good-Lite B.V.  
Kantstraat 19, NL-5076NP Haaren  
P.O. Box 10110, NL-5060 GA Oisterwijk  
The Netherlands  
[EU@medical-risk.com](mailto:EU@medical-risk.com)  
+31 (0) 411.623791  
SRN: NL-AR-000002695



QNET Ltd.  
Livingstone House, 309 Harrow Road  
Wembley, Middlesex HA9 6BD (GB)  
[UKRP@medical-risk.com](mailto:UKRP@medical-risk.com)  
MHRA Account No: 0000011991



QNET CH-REP GmbH  
Im Büel 15  
8750 Glarus (Switzerland)  
[CH-REP@medical-risk.com](mailto:CH-REP@medical-risk.com)  
UID Number: CH-913.448.831  
Ph.: +41 79 610 0870



**MD** ESC2000™ Illuminated ETRS Clinical Trial Cabinet

**REF** ESC2000™

Left blank intentionally.

Left blank intentionally.

# GOOD-LITE<sup>®</sup>

OVER 90 YEARS OF VISION

**Good-Lite Company.** 1155 Jansen Farm Drive, Elgin, IL 60123

800-362-3860, *orders@good-lite.com*, **good-lite.com**